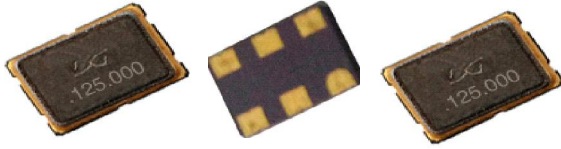




SMD7050 LVPECL Crystal Oscillator



■ FEATURES

- Tri-State Enable/Disable
- Low jitter and Noise
- Mainly used in SONET,SDH and Gb Ethernet
- Tape And Reel

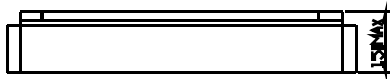
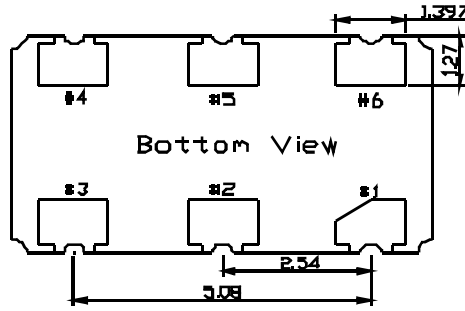
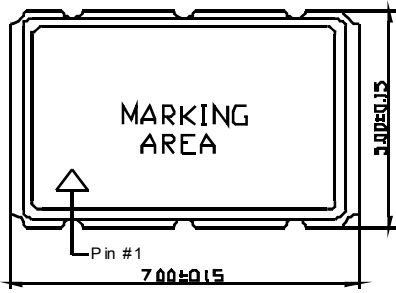
■ SPECIFICATION:

Parameter	Min	Typical	Max	Unit
Package	SMD5032			
Frequency Range(F0)	62.50		200.00	MHz
Frequency Tolerance @25±3°C(ΔF/F0)	±20	F0	±50	PPM
Frequency Stability @T <sub>OPR</sub> (ΔF/F0)	±20	F0	±50	PPM
Operating Temperature Range(T <sub>OPR</sub> )	-40		+85	°C
Storage Temperature Range(T <sub>STG</sub> )	-55		+125	°C
Operating Voltage(V <sub>CC</sub> )	3.3±5%			V
Input Current On Load(I <sub>CC</sub> )			90	mA
Duty Cycle(η)	45	50	55	%
Rise Time (Tr)			1	ns
Fall Time (Tf)			1	ns
Start Time(Ts)			10	ms
Output Load	50Ω to V <sub>CC</sub> -2.0V			
Integrated phase jitter(RMS)	1ps( max) at Integrated 12KHz to 20MHz			
Output Low Voltage Level("0")			V <sub>CC</sub> -1.620	V
Output High Voltage Level("1")	V <sub>CC</sub> -1.025			V





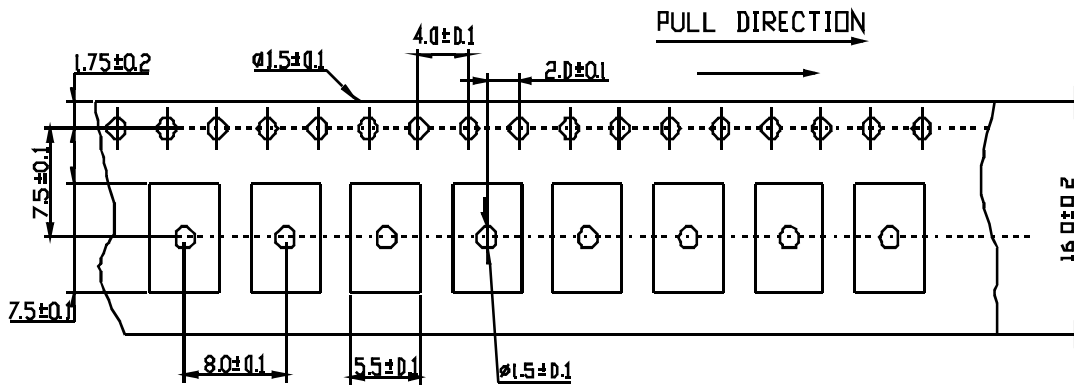
■ DIMENSIONS AND PIN FUNCTION:



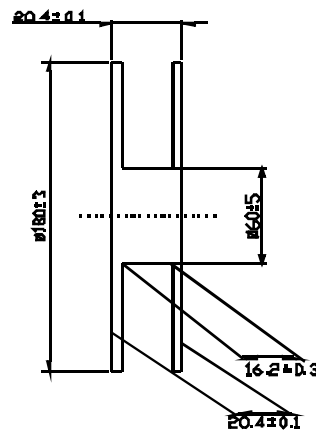
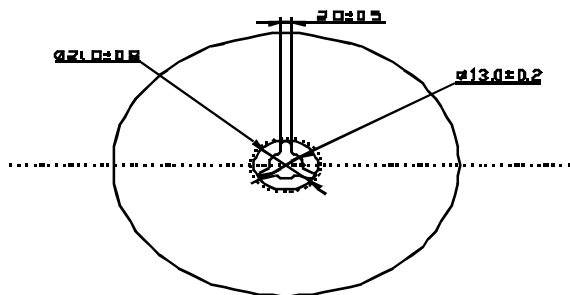
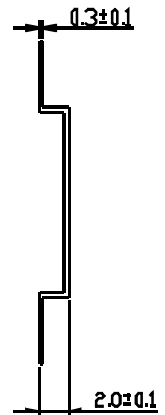
Package Drawing(Gold Over Nickel Plating)  
Unit:mm

Pin#	Symbol	Function
1	NC	Enable/Disable Function
2	NC	This pin has no internal connection and is floating
3	GND	Ground
4	F0	Output Frequency
5	Cf0	Complementary Output Frequency
6	Vcc	Supply Voltage

■ TAPING AND REEL:



PULL DIRECTION  
→

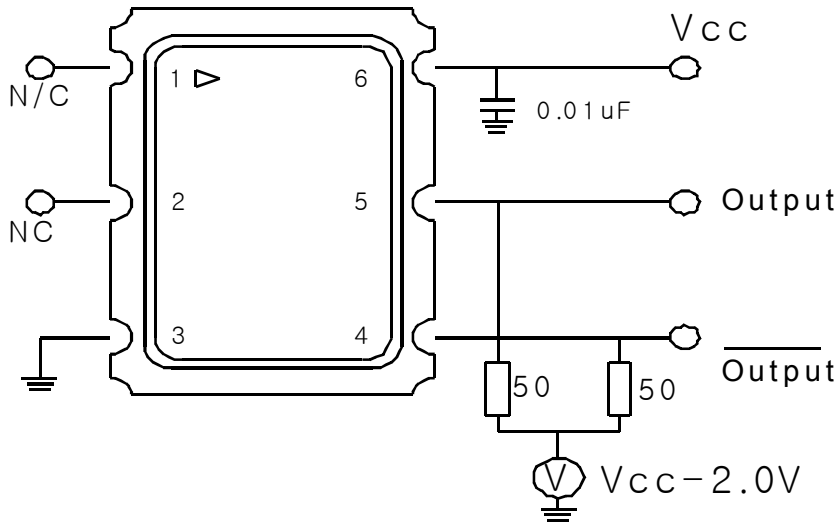


Unit: mm





■ TEST CIRCUITS:



■ OUTPUT WAVEFORM:

